



## FERM OTM1007 Multi Tool Instruction Manual

[Home](#) » [FERM](#) » FERM OTM1007 Multi Tool Instruction Manual

### Contents [ [hide](#) ]

- 1 FERM OTM1007 Multi Tool
- 2 MULTITool OTM1007
- 3 SAFETY WARNINGS
- 4 Mains plug replacement (UK only)
- 5 Technical data
- 6 Noise and vibration
- 7 Vibration level
- 8 DESCRIPTION (FIG. A)
- 9 ASSEMBLY
- 10 USE
- 11 Hints for optimum use
- 12 CLEANING AND MAINTENANCE
- 13 WARRANTY
- 14 ENVIRONMENT
- 15 Spare Parts List
- 16 Exploded view
- 17 DECLARATION OF CONFORMITY
- 18 Documents / Resources
  - 18.1 References
- 19 Related Posts



**FERM OTM1007 Multi Tool**



## **MULTITOOL OTM1007**

Thank you for buying this Ferm product. By doing so you now have an excellent product, delivered by one of Europe's leading suppliers. All products delivered to you by Ferm are manufactured according to the highest standards of performance and safety. As part of our philosophy, we also provide excellent customer service, backed by our comprehensive warranty. We hope you will enjoy using this product for many years to come.

## **SAFETY WARNINGS**

### **WARNING**

Read the enclosed safety warnings, the additional safety warnings and the instructions. Failure to follow the safety warnings and the instructions may result in electric shock, fire and/or serious injury. Keep the safety warnings and the instructions for future reference.

The following symbols are used in the user manual or on the product:

- Read the user manual.
- Risk of personal injury.
- Risk of electric shock.
- Immediately remove the mains plug from the mains if the mains cable becomes damaged and during cleaning and maintenance.
- Risk of flying objects. Keep bystanders away from the work area.
- Wear safety goggles.
- Wear hearing protection.
- Wear a dust mask.
- Do not dispose of the product in unsuitable containers.
- The product is in accordance with the applicable safety standards in the European directives.

## **Additional safety warnings for multitools**

Contact with or inhalation of dust coming free during use (e.g. lead-painted surfaces, wood and metal) can endanger your health and the health of bystanders. Always wear appropriate protective equipment, such as a dust mask. Always use proper dust extraction during use.

- Do not work materials containing asbestos. Asbestos is considered carcinogenic.
- Do not work metal with a magnesium content of more than 80%.
- Be very careful when working on painted surfaces.
- Do not use accessories that are not specifically designed and recommended by the manufacturer. Risk of personal injury.
- Inspect the machine and the accessories before each use. Do not use accessories which are bent, cracked, or otherwise damaged. If the machine or one of the accessories is dropped, inspect the machine or the accessory for damage. If necessary, replace the accessory.
- Only use accessories that are recommended by the manufacturer.
- Only use accessories that are suitable for the application.
- Only use accessories with the correct dimensions.
- Do not use accessories that require liquid coolants. Risk of electric shock.
- Make sure that the accessories are properly mounted. Do not use adapters or other aids to mount accessories with another spindle diameter.
- Make sure that the maximum speed for the accessory is larger than or the same as the maximum speed of the machine. Refer to the rating plate on the machine.
- Let the machine run at no load in a safe area after mounting the accessories. If the machine vibrates strongly, immediately switch off the machine, remove the mains plug from the mains, and try to solve the problem.
- Make sure that the workpiece is properly supported or fixed.
- Wear safety goggles. Wear hearing protection. Wear a dust mask. If necessary, use other protective means, such as safety gloves, safety shoes, etc. Risk of personal injury.
- Keep bystanders away from the work area. Make sure that all persons in the work area wear protective equipment. Risk of personal injury.
- Keep the mains cable away from the rotating accessory. If the mains cable touches the rotating accessory, your hands or arms may come in contact with the accessory. Risk of personal injury.
- Hold the machine by the insulated gripping surfaces where the accessory may contact hidden wiring or the mains cable. If the accessory contacts a 'live' wire, the exposed metal parts of the machine can also become 'live'. Risk of electric shock.
- Do not use the machine while carrying it at your side. Risk of personal injury.
- Do not use the machine near flammable materials. Risk of fire.
- Beware that the accessory continues to rotate for a short period after switching off the machine. Do not attempt to bring the accessory to a standstill yourself.
- Never put the machine down on a table or a workbench before it has been switched off. Regularly clean the ventilation slots. Risk of electric shock.

## **Electrical safety**

Always check that the voltage of the power supply corresponds to the voltage on the rating plate.

- Do not use the machine if the mains cable or the mains plug is damaged.

- Only use extension cables that are suitable for the power rating of the machine with a minimum thickness of 1.5 mm<sup>2</sup>. If you use an extension cable reel, always fully unroll the cable.

## **Mains plug replacement (UK only)**

If the moulded 3-pin plug attached to the unit is damaged and needs replacing, it is important that it is correctly destroyed and replaced by an approved BS 1363/3A fused plug and that the following wiring instructions are followed.

The wires in the mains cable are coloured in accordance with the following code:

- blue neutral
- brown live

As the colours of the wires in the mains cable of the unit may not correspond to the coloured markings identifying the terminals in the plug, proceed as follows:

- The wire which is coloured blue must be connected to the terminal which is marked with the letter N or coloured black.
- The wire which is coloured brown must be connected to the terminal which is marked with the letter L or coloured red.

## **Technical data**

- Mains voltage: V~ 220-240
- Mains frequency: Hz 50
- Power input: W 300
- No-load speed: min-1 0-23.000
- Weight: kg 1.21

## **Noise and vibration**

- Sound pressure (L<sub>pa</sub>) dB(A): 85
- Acoustic power (L<sub>wa</sub>) dB(A): 96
- Uncertainty (K) dB(A): 3
- Vibration (sawing in steel) m/s<sup>2</sup>: 7.28
- Uncertainty (K) m/s<sup>2</sup>: 1.5

**Note:** Wear hearing protection.

## **Vibration level**

The vibration emission level stated in this instruction manual has been measured in accordance with a standardised test given in EN 60745; it may be used to compare one tool with another and as a preliminary assessment of exposure to vibration when using the tool for the applications mentioned

- using the tool for different applications, or with different or poorly maintained accessories, may significantly

increase the exposure level

- the times when the tool is switched off or when it is running but not actually doing the job, may significantly reduce the exposure level

Protect yourself against the effects of vibration by maintaining the tool and its accessories, keeping your hands warm, and organizing your work patterns.

## DESCRIPTION (FIG. A)



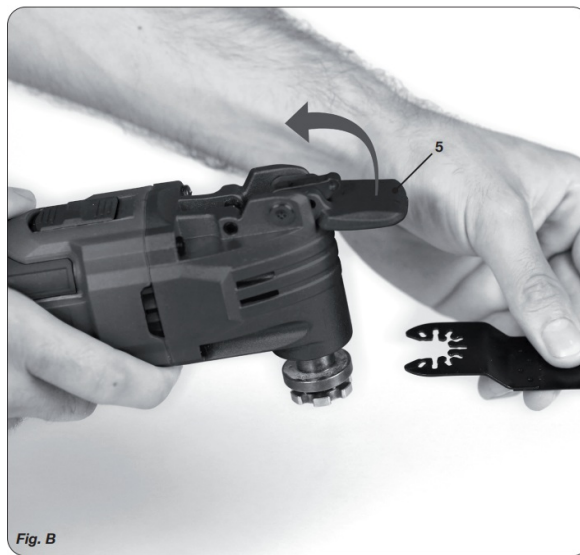
Your multitool has been designed for light sanding, sawing and scraping applications.

1. On/off switch
2. Speed adjustment wheel
3. Mounting points for accessories
4. Grip
5. Quick change lever
6. Carbon brush cover
7. Carbon brush holder

## ASSEMBLY

Before assembly, always switch off the machine and remove the mains plug from the mains. The sanding pad and the sanding paper must be used for sanding applications.

### Removing and mouting accessories (fig. B)



- Release the quick change lever (5) and slide the accessory forward to remove from the holder.
- Slide the accessory in the holder and fasten the quick change lever (5).

## USE

### Switching on and off

- To switch on the machine, slide the on/off switch (1) to the front.
- To switch off the machine, slide the on/off switch (1) to the rear.

### Setting the speed

The speed adjustment wheel is used for setting the speed. The speed adjustment wheel can be set to 6 positions. The ideal speed depends on the application and on the material to be worked.

**Note:** Do not set the speed during use.

Turn the speed adjustment wheel (2) to the required position.

### Hints for optimum use

- Clamp the workpiece. Use a clamping device for small workpieces.
- Draw a line to define the direction in which to guide the accessory.
- Firmly hold the machine by the grip.
- Switch on the machine.
- Wait until the machine has reached full speed.
- Place the accessory on the workpiece.
- Slowly move the machine along the pre-drawn line, firmly pressing the accessory against the workpiece.
- Do not apply too much pressure on the machine. Let the machine do the work.
- Switch off the machine and wait for the machine to come to a complete standstill before putting the machine down.

## CLEANING AND MAINTENANCE

Before cleaning and maintenance, always switch off the machine and remove the mains plug from the mains.

- Regularly clean the housing with a soft cloth.
- Keep the ventilation slots free from dust and dirt. If necessary, use a soft, moist cloth to remove dust and dirt from the ventilation slots.

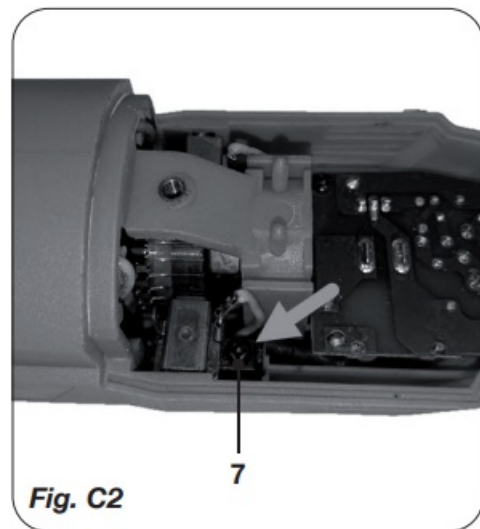
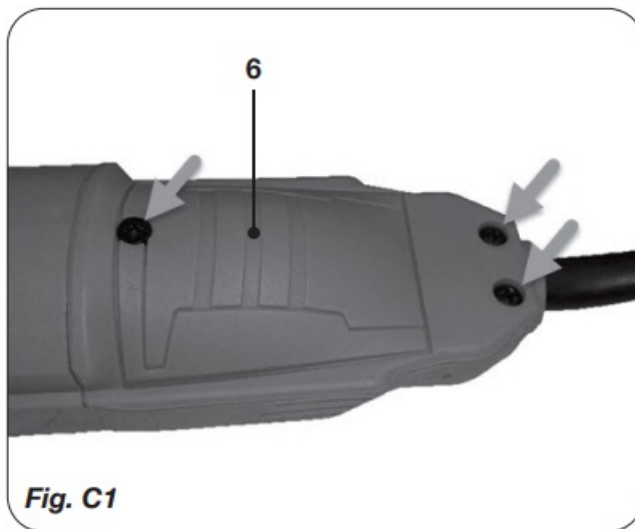
### Replacing the accessories

Worn or damaged accessories must be replaced immediately.

**Note:** Only use sharp and undamaged accessories.

- To remove the accessory, proceed as described in the corresponding section.
- To mount the accessory, proceed as described in the corresponding section.

### Checking and replacing the carbon brushes



The carbon brushes must be checked regularly. If the carbon brushes are worn, the machine will start to run unevenly.

### Only use the correct type of carbon brushes.

- Remove the carbon brush cover (6)
- Remove the carbon brush holders (7) using a screwdriver.
- Clean the carbon brushes.
- In case of wear, replace both carbon brushes at the same time.
- Mount the carbon brush holders (7) using a screwdriver.
- After mounting the new carbon brushes, let the machine run at no load for 15 minutes.

## WARRANTY

Consult the enclosed warranty terms.

## ENVIRONMENT

### Disposal

The product, the accessories, and the packaging must be sorted for environmentally friendly recycling.

**Only for EC countries**

Do not dispose of power tools into domestic waste. According to the European Guideline 2012/19/EU for Waste Electrical and Electronic Equipment and its implementation into national right, power tools that are no longer usable must be collected separately and disposed of in an environmentally friendly way.

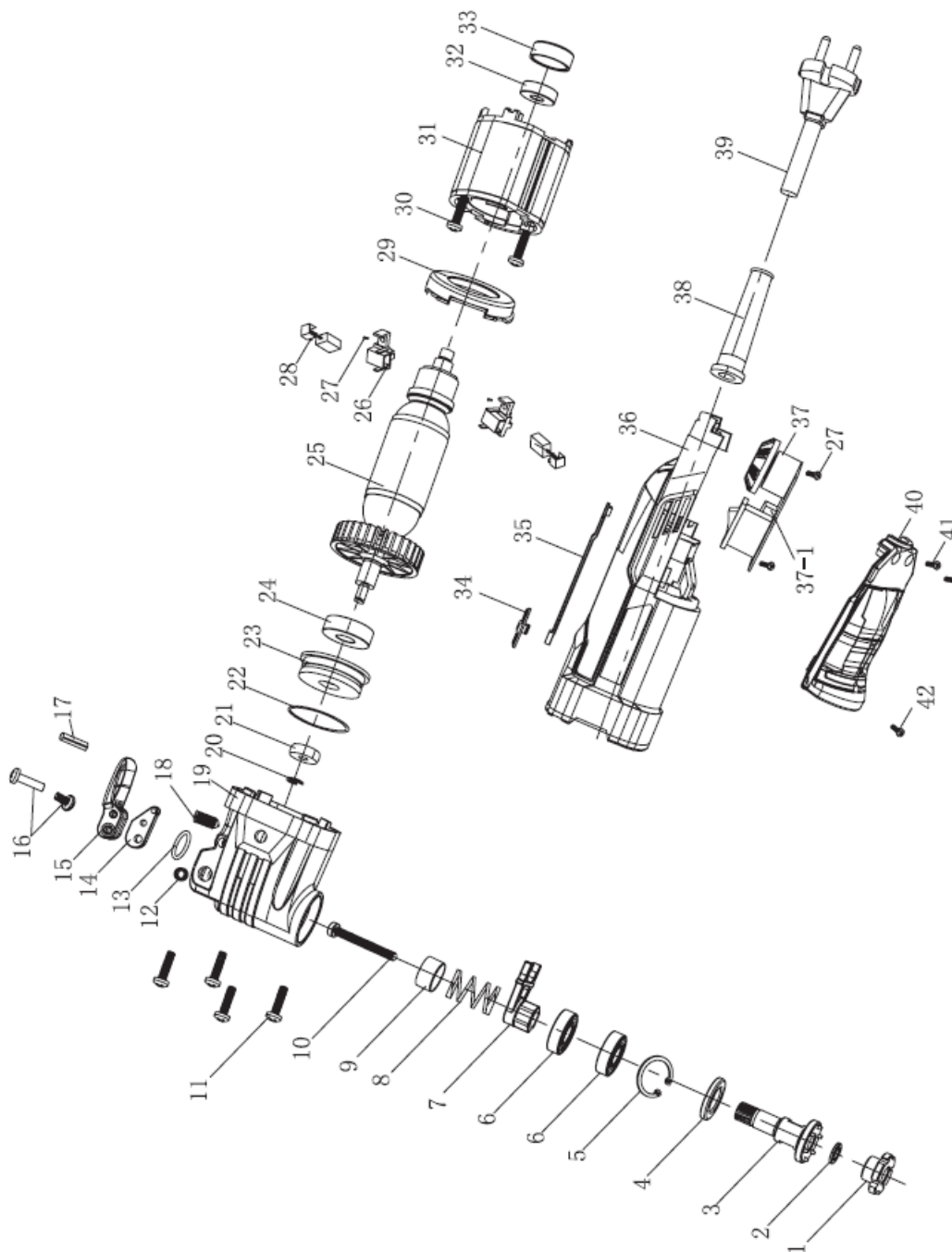
The product and the user manual are subject to change. Specifications can be changed without further notice.

**Spare Parts List****OTM 1007**

No	Description	Position
410580	Spindle	3
410581	Bearing 6001	6
410582	Oscillating fork	7
410583	Rotor + excentrical bearing complete	20..25
410584	Carbon brush + holder	26 28
410585	Rear rotor bearing + sleeve	32 33
410586	Switch + bar	34 35
410587	PCB complete	37 37-1



## Exploded view



## DECLARATION OF CONFORMITY

We declare under our sole responsibility that this product is in conformity with directive 2011/65/EU of the European Parliament and of the council of 8 June on the restriction of the use of certain hazardous substances in electrical and electronic equipment is in conformity and accordance with the following standards and regulations:

EN 55014-1, EN 55014-2, EN 62841-1, EN 62841-2-4, EK9-BE-88, EN ISO 12100, EN 61000-3-2, EN 61000-3-3 2006/42/EC, 2014/30/EU, 2012/19/EU, 2011/65/EU

- FERM – Lingenstraat
- 6 – 8028 PM – Zwolle – The Netherlands
- [WWW.FERM.COM](http://WWW.FERM.COM)

## Documents / Resources



[FERM OTM1007 Multi Tool](#) [pdf] Instruction Manual  
OTM1007, Multi Tool, OTM1007 Multi Tool

## References

- [FERM Power Tools - Power to create](#)